

# THE INTERMITTENT NATURE OF EDMUND BURKE

FRED CALLAWAY

**A** ♩ = 140

Musical notation for the first system (measures 1-4). The score is in 4/4 time with a tempo of 140. It features a treble clef with a key signature of three flats (B-flat, E-flat, A-flat) and a bass clef. The melody is written in the treble clef, and the accompaniment is in the bass clef. The notes are: 1. G4, A4, Bb4, C5; 2. Bb4, A4, G4, F4; 3. E4, D4, C4, Bb3; 4. A3, G3, F3, E3. The chords are: 1. F(add9), Fm11/C; 2. Ebm11/Bb, Gbmaj7(#11); 3. F(add9), Fm11/C; 4. Ebm11/Bb, Gbmaj7(#11).

5

Musical notation for the second system (measures 5-8). The melody continues from the first system. The notes are: 5. D4, C4, Bb3, A3; 6. G3, F3, E3, D3; 7. C3, Bb2, A2, G2; 8. F2, E2, D2, C2. The chords are: 5. F(add9), Fm11/C; 6. Ebm11/Bb, Gbmaj7(#11); 7. F(add9), Fm11/C; 8. Ebm11/Bb, Gbmaj7(#11).

9

Musical notation for the third system (measures 9-12). The melody continues from the second system. The notes are: 9. Bb3, A3, G3, F3; 10. E3, D3, C3, Bb2; 11. A2, G2, F2, E2; 12. D2, C2, Bb1, A1. The chords are: 9. Ebm11/Bb, Fm11/C; 10. Gm11/D, Ebm7; 11. Ebm7, A7(sus4); 12. A7(sus4).

13

A7 A7(#11) Gm11 Gbmaj7

A7 A7(#11) Gm11 Gbmaj7

**A2**

17

F(add9) Fm11/C Ebm11/Bb Gbmaj7(#11) F(add9) Fm11/C Ebm11/Bb Gbmaj7(#11)

**A2** F(add9) Fm11/C Ebm11/Bb Gbmaj7(#11) F(add9) Fm11/C Ebm11/Bb Gbmaj7(#11)

21

F(add9) Fm11/C Ebm11/Bb Gbmaj7(#11) F(add9) Fm11/C Ebm11/Bb Gbmaj7(#11)

F(add9) Fm11/C Ebm11/Bb Gbmaj7(#11) F(add9) Fm11/C Ebm11/Bb Gbmaj7(#11)

**SOLOS**

25 F(add9) Fm11/C Ebm11/Bb Gbmaj7(#11) F(add9) Fm11/C Ebm11/Bb Gbmaj7(#11) 4x <sup>3</sup>

Musical staff for guitar solo 25, measure 1-4, treble clef. The staff contains four measures of whole rests, corresponding to the chords listed above.

**SOLOS**

F(add9) Fm11/C Ebm11/Bb Gbmaj7(#11) F(add9) Fm11/C Ebm11/Bb Gbmaj7(#11) 4x

Musical staff for guitar solo 25, measure 1-4, treble clef. The staff contains four measures of whole rests, corresponding to the chords listed above.

Musical staff for guitar solo 25, measure 1-4, bass clef. The staff contains four measures of whole rests, corresponding to the chords listed above.

**SOLOS**

F(add9) Fm11/C Ebm11/Bb Gbmaj7(#11) F(add9) Fm11/C Ebm11/Bb Gbmaj7(#11) 4x

Musical staff for guitar solo 25, measure 1-4, bass clef. The staff contains four measures of whole rests, corresponding to the chords listed above.

29 Ebm11/Bb Fm11/C Gm11/D Ebm7 A7(sus4) A7 Gm11 Gbmaj7

Musical staff for guitar solo 29, measure 1-8, treble clef. The staff contains eight measures of whole rests, corresponding to the chords listed above.

Ebm11/Bb Fm11/C Gm11/D Ebm7 A7(sus4) A7 Gm11 Gbmaj7

Musical staff for guitar solo 29, measure 1-8, treble clef. The staff contains eight measures of whole rests, corresponding to the chords listed above.

Musical staff for guitar solo 29, measure 1-8, bass clef. The staff contains eight measures of whole rests, corresponding to the chords listed above.

Ebm11/Bb Fm11/C Gm11/D Ebm7 A7(sus4) A7 Gm11 Gbmaj7

Musical staff for guitar solo 29, measure 1-8, bass clef. The staff contains eight measures of whole rests, corresponding to the chords listed above.

37 F(add9) Fm11/C Ebm11/Bb Gbmaj7(#11) F(add9) Fm11/C Ebm11/Bb Gbmaj7(#11) 2x

Musical staff for guitar solo 37, measure 1-4, treble clef. The staff contains four measures of whole rests, corresponding to the chords listed above.

F(add9) Fm11/C Ebm11/Bb Gbmaj7(#11) F(add9) Fm11/C Ebm11/Bb Gbmaj7(#11) 2x

Musical staff for guitar solo 37, measure 1-4, treble clef. The staff contains four measures of whole rests, corresponding to the chords listed above.

Musical staff for guitar solo 37, measure 1-4, bass clef. The staff contains four measures of whole rests, corresponding to the chords listed above.

F(add9) Fm11/C Ebm11/Bb Gbmaj7(#11) F(add9) Fm11/C Ebm11/Bb Gbmaj7(#11) 2x

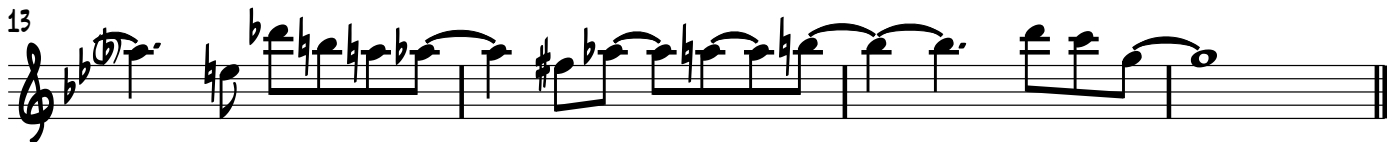
Musical staff for guitar solo 37, measure 1-4, bass clef. The staff contains four measures of whole rests, corresponding to the chords listed above.

# THE INTERMITTENT NATURE OF EDMUND BURKE

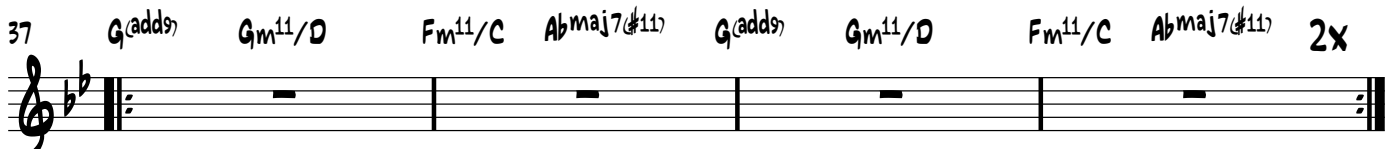
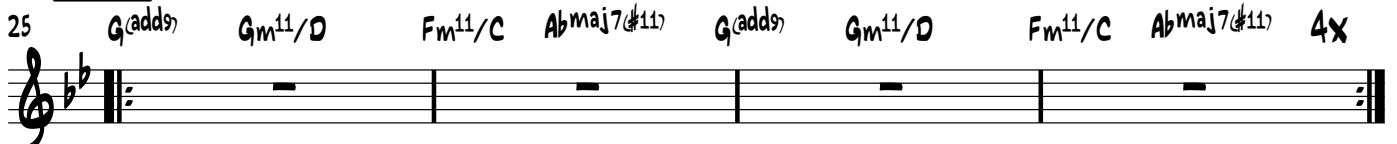
TENOR SAXOPHONE

FRED CALLAWAY

**A** ♩ = 140



**SOLOS**



# THE INTERMITTENT NATURE OF EDMUND BURKE

PIANO

FRED CALLAWAY

**A**  $\text{♩} = 140$   
 F(add9) Fm<sup>11</sup>/C Ebm<sup>11</sup>/Bb Gbmaj7(♯11) F(add9) Fm<sup>11</sup>/C Ebm<sup>11</sup>/Bb Gbmaj7(♯11)

5 F(add9) Fm<sup>11</sup>/C Ebm<sup>11</sup>/Bb Gbmaj7(♯11) F(add9) Fm<sup>11</sup>/C Ebm<sup>11</sup>/Bb Gbmaj7(♯11)

**B**  
 9 Ebm<sup>11</sup>/Bb Fm<sup>11</sup>/C Gm<sup>11</sup>/D Ebm<sup>7</sup> A7(SUS4)

13 A7 A7(♯11) Gm<sup>11</sup> Gbmaj7

**A2**  
 17 F(add9) Fm<sup>11</sup>/C Em<sup>11</sup>/Bb Gbmaj7(♯11) F(add9) Fm<sup>11</sup>/C Em<sup>11</sup>/Bb Gbmaj7(♯11)

2

21 F(add9) Fm11/C Em11/Bb Gbmaj7(#11) PIANO F(add9) Fm11/C Em11/Bb Gbmaj7(#11)

**SOLOS**

25 F(add9) Fm11/C Ebm11/Bb Gbmaj7(#11) F(add9) Fm11/C Ebm11/Bb Gbmaj7(#11) 4x

29 Ebm11/Bb Fm11/C Gm11/D Ebm7 A7(sus4) A7 Gm11 Gbmaj7

37 F(add9) Fm11/C Ebm11/Bb Gbmaj7(#11) F(add9) Fm11/C Ebm11/Bb Gbmaj7(#11) 2x

# THE INTERMITTENT NATURE OF EDMUND BURKE

BASS

FRED CALLAWAY

**A** ♩ = 140

F(add9) Fm<sup>11</sup>/C Ebm<sup>11</sup>/Bb Gbmaj7(#11) F(add9) Fm<sup>11</sup>/C Ebm<sup>11</sup>/Bb Gbmaj7(#11)

5 F(add9) Fm<sup>11</sup>/C Ebm<sup>11</sup>/Bb Gbmaj7(#11) F(add9) Fm<sup>11</sup>/C Ebm<sup>11</sup>/Bb Gbmaj7(#11)

9 **B** Ebm<sup>11</sup>/Bb Fm<sup>11</sup>/C Gm<sup>11</sup>/D Ebm<sup>7</sup> A7(SUS4)

13 A7 A7(#11) Gm<sup>11</sup> Gbmaj7

17 **A2** F(add9) Fm<sup>11</sup>/C Ebm<sup>11</sup>/Bb Gbmaj7(#11) F(add9) Fm<sup>11</sup>/C Ebm<sup>11</sup>/Bb Gbmaj7(#11)

21 F(add9) Fm<sup>11</sup>/C Ebm<sup>11</sup>/Bb Gbmaj7(#11) F(add9) Fm<sup>11</sup>/C Ebm<sup>11</sup>/Bb Gbmaj7(#11)

25 **SOLOS** F(add9) Fm<sup>11</sup>/C Ebm<sup>11</sup>/Bb Gbmaj7(#11) F(add9) Fm<sup>11</sup>/C Ebm<sup>11</sup>/Bb Gbmaj7(#11) 4x

29 Ebm<sup>11</sup>/Bb Fm<sup>11</sup>/C Gm<sup>11</sup>/D Ebm<sup>7</sup> A7(SUS4) A7 Gm<sup>11</sup> Gbmaj7

37 F(add9) Fm<sup>11</sup>/C Ebm<sup>11</sup>/Bb Gbmaj7(#11) F(add9) Fm<sup>11</sup>/C Ebm<sup>11</sup>/Bb Gbmaj7(#11) 2x